

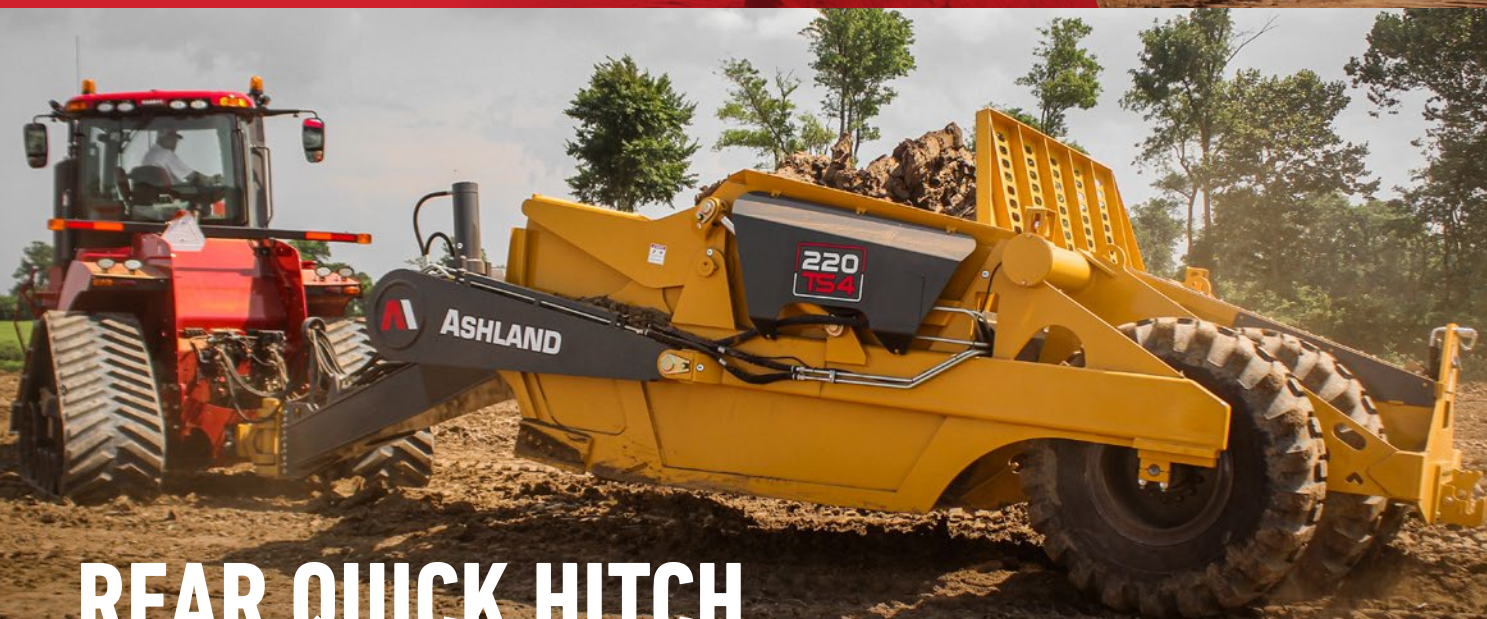
HIGH-CAPACITY EJECTOR CONSTRUCTION SCRAPERS

215**TS2**
220**TS4**
241**E**
281**E**
3013**E**
3413**E**



BORN IN THE DIRT

Construction earthmoving contractors are a special breed. You live your work and expect the equipment you buy to work as hard as you do. That's what makes the 215TS2 and 220TS4 so unique – they are built tough by engineers and skilled craftsman who have spent their lives working in the dirt searching for solutions and innovations to allow you to DO MORE.



REAR QUICK HITCH

The 215TS2 and 220TS4 are truly versatile machines that can be pulled as singles or tandems to suit your jobsite demands. Both of these models come standard as lead units with the necessary hydraulic plumbing and rear quick hitches to make tandem operation a breeze. Drop your cost-per-yard and increase efficiency by pulling these scrapers in tandem to get a doubled heaped capacity of 40+ cu. yds.



RETURN ON INVESTMENT

The 215 and 220 series scrapers will run day and night to maximize your return on investment. Built around the 180 scraper platform, these machines have been bulked up and been running with the best crews for years. With friction welded cylinder rod eyes, a skeletal built hitch pole frame, heavy wall front section pipe, high grade steel, upgraded cylinders, massive tires, hubs and axles - this bullet proof design is made to make you money.

215TS2



CAPACITY:
21.5 yd³ (16.4 m³)

RECOMMENDED HORSEPOWER:
400-620 hp
(298-462 kw)

WIDTH OF CUT:
10 ft. 6" (3.23 m)

For complete machine specifications see page 52

EQUIPMENT FEATURES

- › High-flow sequence and counter-balance valve manifold system swivel knuckle
- › Rear quick hitch for safe hookup tandem operation
- › Left side sub-shield for easy valve adjustments
- › New ejector cylinder
- › Steel bulkhead
- › Laser pad on cross-member
- › Shouldered sidewall rollers
- › Redesigned Trunnion-block for better lubrication
- › Robust trailing arms that are 20% larger and made with stronger steel than previous models
- › Apron Viewing Windows
- › LED lighting with steel protection cage
- › Front hitch track guards
- › Reversible 5-piece cutting edges
- › Solid pillow-block mounted pass-through axle system
- › **215TS2 Rear Tires (2):** 29.5 x 25, bias 28-ply
- › **220TS4 Rear Tires (4):** 20.5 x 25, bias 20-Ply
Tires can be installed in-line or offset
- › See-through ejector spill plate
- › Convenient grease zerks in all hubs
- › Tilted bowl sidewalls, prevents dirt buildup.
- › 2.11 gallon Nitrogen over hydraulic accumulator
- › Fully assembled
- › 1-Year Warranty (Machine)
2-year Hydraulic Cylinder Warranty



**LEARN MORE ABOUT OUR COMPLETE
EJECTOR SCRAPER LINEUP**

220TS4



CAPACITY:
22 yd³ (16.8 m³)

RECOMMENDED HORSEPOWER:
400-620 hp
(298-462 kw)

WIDTH OF CUT:
10 ft. 6" (3.23 m)

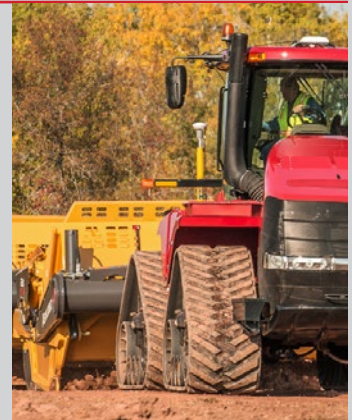
For complete machine specifications see page 52



Extra Thick 5-Piece Blade Set



Torsion Box Style Reinforced Hitch Pole



Easily Visible Cutting Edge



Road Width For Easy Transport



Tilt-able Rack to Improve Top Loading



Super Swivel Yoke

24-34

CUBIC YARDS



Introducing our **NEW** line of high capacity construction scrapers. These big boys are made to carry more so you can do more. Incorporating a modular design, these models increase flexibility and efficiency, while offering excellent value for you, the contractor.



POSITIONABLE WHEELS

The rear frame allows the four independent wheel assemblies to be installed in various positions. The most common is offset, which reduces mud build-up and prevents material from pushing ahead of the tire in soft conditions. Since each wheel is separate, tire servicing is more manageable as one tire is easier to handle than two tires installed onto one common hub.



MAKE IT A DOUBLE

The 2411E, 2811E, and 3013E front units can be equipped with a rear quick-hitch that allows you to easily hook up scrapers in tandem. Mixed fleets are able to connect other scraper brands including K-Tec (2"), John Deere (60mm), and Ashland (1.5").





MODULAR DESIGN

An innovative bolt together design allows these scrapers to be loaded into a standard 40' high cube container. Not only is this modular design beneficial for affordable overseas shipping, it also increases longevity as assemblies can be replaced in the event of accidental damage that may occur in tough construction environments.

TANDEM CAPACITY



HUGE GATE

EASY UNLOAD



With a spacious 74" (188 cm) front opening and 25" (63.5 cm) of ground clearance, material can exit the scraper unobstructed, reducing the need to double eject thicker material and allowing the operator to place material exactly where it is needed, which increases daily production.



THE STRENGTH TO PUSH LOAD

Every operator loves a large heap! Bolt on a rear push block for increased power and speed while loading. Pushing loading with an appropriately sized dozer does not void the 1 year warranty.

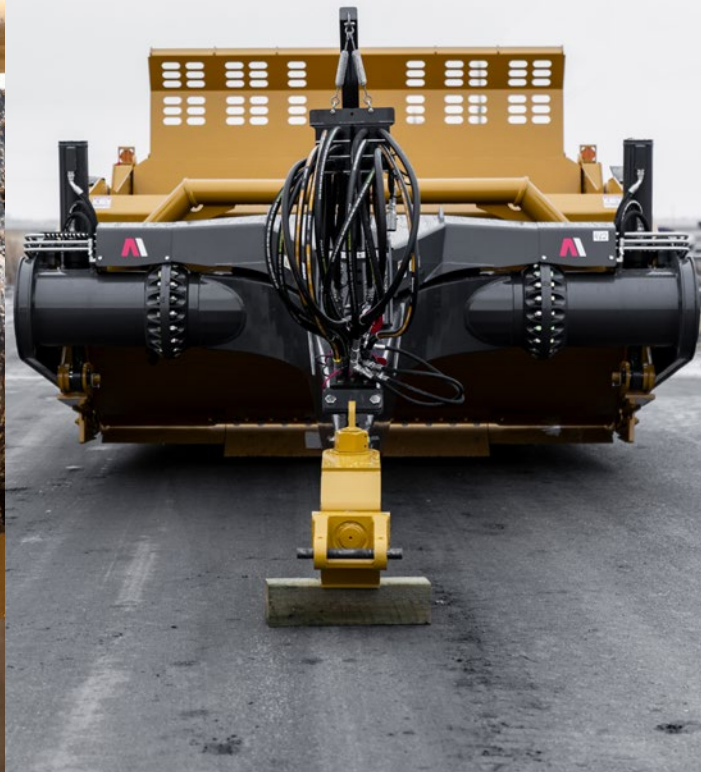
SMOOTH RIDE

Joining forces has its benefits. Our new scraper line is equipped with K-Tec's automatic cushion ride system.



NARROW WIDTH

The 2411E and 2811E are ideal for customers who work in high density areas. Their under 12 ft. road transport width reduce your mobilization cost since escorts or permits are not needed.



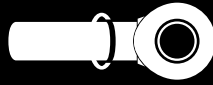
EQUIPPED TO DO MORE.

KEY FEATURES



MINIMAL MAINTENANCE

Oversized pins and greaseless bushings are used throughout the machine to reduce the time spent lubricating hard to reach grease zerks.



SUPERIOR CYLINDER

Unrivaled hydraulic cylinder design ensures maximum uptime and provides a 2-year hydraulic cylinder warranty. Features like; high strength impact resistant HD barrels, induction chrome plated rods with friction welded rod eyes, rebuildable high-pressure sealing system, internal precision wear bearings and maintenance free composite bushings.



HIGH TENSILE STEEL

Using Hardox and Weldox steel allows Ashland to build stronger and lighter scrapers than competitors.



GPS LASER ADAPTABLE

Ashland Scrapers are GPS ready for the efficient excavation and placement of bulk material to meet job site specifications.

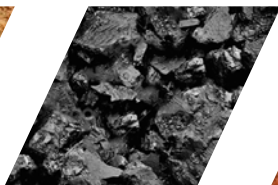


ONE YEAR WARRANTY

Trusted to do more. Our confidence in high tensile steel provides security for your earthmoving investment.

SOIL TYPES

Ashland high capacity scrapers have many uses for earthmoving projects across a variety of soil types. Our scrapers excel in each soil type application, including the following: Sand, Topsoil, Clay, Coal, Silt, Loam, Hardpan, Gypsum, and more.



APPLICATIONS



SITE PREPARATION

Commercial & Residential Developments
Ranch Acreages
Cattle Feedlots
Oil Field Preparation
Military Weapon Ranges
Warehouse Distribution & Data Center Foundations
Factory & Campus Foundations



LAND TRANSFORMATION

Wildlife Reserves
Creation of Levees for Flood Protection
Golf Course Development
Landfill Development
Solar Fields & Wind Farms



ROAD BUILDING

Interstate Highway Expansions & Repair
Suburban Residential Roads
Access, Service & Haul Roads
Airport Runway Expansions

2411E / 2811E



CAPACITY:
24.5 yd³ (18.4 m³)
28 yd³ (21.4 m³)

**TRACTOR DRAWBAR
HORSEPOWER:** 500+

WIDTH OF CUT:
11 ft. (3.4 m)

The stress of moving overwidth equipment within highly populated areas has always been challenging, especially for customers looking for a larger capacity scraper. The 2411E (24 yd³) and 2811E (28 yd³) are the only high capacity ejector scraper on the market today under 12 ft. road transport. The 11 ft. width of cut on both of these scrapers are the perfect match for high

horsepower rubber track tractors. If transport width is not an issue, step up to our larger capacity 30 and 34 yd³ Scrapers. These two models have the same list of impressive features, easy loading & unloading, offset tires, high ground clearance and ride control within a slightly wider 13 ft. width of cut.

STANDARD FEATURES

- › Tires can be offset (less mud buildup)
- › Improved pins with greaseless bushings
- › Steel bulkhead
- › Laser pad on cross-member
- › New trunion-block, improved grease retention
- › 16" diameter high strength front section
- › 2.11 gal. nitrogen over hydraulic accumulator
- › 1-year warranty (scraper) 2-year hydraulic cylinder warranty
- › Solid pillow-block mounted pass-thru axle system
- › Rear Tires (4): 23.5 x 25, Radial Tires
- › Industrial multi-piece split-rim
- › Dual-plated floor
- › Convenient grease zerks in all hubs
- › Fully assembled North American shipping

**VISIT ASHLANDIND.COM TO SEE THESE
MASSIVE MACHINES IN ACTION!**

3013E / 3413E



CAPACITY:
30 yd³ (23 m³)
34 yd³ (26 m³)

**TRACTOR DRAWBAR
HORSEPOWER:** 500+

WIDTH OF CUT:
13 ft. (3.9 m)

For customers who want to maximize their production needs, Ashland offers two large-format ejector scrapers with a 13 ft. width of cut while still under a 14 ft. transport width. The 3013E has an impressive 30 yd³ heaped capacity while the 3413E has a massive 34 yd³ heaped capacity. These two scrapers are virtually identical, with the primary difference being a 12" deeper

bowl depth on the 3413E. Both of these large-format scrapers have superior ground clearance, large gate openings for unobstructed unloading, adjustable wheel positioning for better compaction and floatation, and K-Tec automatic cushion ride for a smoother ride and reduced wear damage to equipment.



Gate shield with rubber flap



Rugged hydraulic hose stand



Super swivel yoke



Tilting headache rack



28" ground clearance at blade



Rear quick hitch*

*Not available for the 3413E

SPECIFICATIONS

215TS2 / 220TS4

SPECIFICATIONS	215TS2	220TS4
Heaped Capacity	21.5 yd ³ (16.4 m ³)	22 yd ³ (16.8 m ³)
Struck Capacity	15.5 yd ³ (11.9 m ³)	16 yd ³ (12.2 m ³)
Recommended HP	400-620 hp (298-462 kw)	400-620 hp (298-462 kw)
Width of Cut	126" (320.0 cm)	126" (320.0 cm)
Apron Clearance	62" (157.5 cm)	56" (142.2 cm)
Depth of Cut	8" (20.3 cm)	8" (20.3 cm)
Clearance at Blade	18" (45.7 cm)	18" (45.7 cm)
Ejector Cylinders (2)	4" x 60" (101 mm x 1,524 mm)	5" x 60" (127 mm x 1,524 mm)
Apron Cylinders (2)	5" x 13" (127 mm x 330 mm)	5" x 13" (127 mm x 330 mm)
Lift Cylinders (2)	5.5" x 20" (140 mm x 508 mm)	5.5" x 20" (140 mm x 508 mm)
Laser/GPS Bracket	Standard	Standard
Push Bar Extension	Standard	Optional
Tires Std. Rear (2)	29.5 x 25	20.5 x 25
Tires Opt. Rear (2)	29.5R x 25	20.5R x 25
Overall Width	143" (363 cm)	143" (363 cm)
Overall Length	339" (861 cm)	339" (861 cm)
Overall Height	101" (257 cm)	97.5" (248 cm)
Weight (Std. Tire)	26,408 lb (11,978 kg)	26,558 lb (12,047 kg)
Weight (Radial Tire)	26,668 lb (12,096 kg)	27,278 lb (12,373 kg)

PROMPT PARTS & SERVICE

Servicing earthmoving equipment is important to extend the life of the machine. Order consumable parts or request support from our trained service technicians to maintain your scrapers and keep fleets running smoothly.

- > NEXT DAY AIR PARTS
- > CUTTING EDGE BULK ORDER DISCOUNT
- > RECOMMENDED STOCK LIST
- > 24-HOUR SERVICE HOTLINE
+1 866 769 3787

BUILT TO LAST

All Ashland scrapers are built with industry leading manufacturing practices and utilize the latest steel technologies. Our use of high tensile steel in key assemblies gives us confidence that our scrapers will serve you well for years to come. Every Ashland scraper is carefully inspected to ensure they meet our high quality standards.

2411E / 2811E / 3013E / 3413E

Specifications	2411E	2811E	3013E	3413E
Heaped Capacity	24.8 yd ³ (19.0 m ³)	27.8 yd ³ (21.3 m ³)	30.4 yd ³ (23.2 m ³)	34.2 yd ³ (26.1 m ³)
Struck Capacity	15.7 yd ³ (12.0 m ³)	17.4 yd ³ (13.3 m ³)	18.7 yd ³ (14.3 m ³)	20.9 yd ³ (16.0 m ³)
Empty Weight	31,490 lb (14,283 kg)	32,380 lb (14,687 kg)	34,250 lb (15,536 kg)	35,140 lb (15,939 kg)
Max. Load Rating	58,300 lb (26,444 kg)	68,000 lb (30,844 kg)	72,800 lb (33,022 kg)	82,500 lb (37,421 kg)
Bucket Dimensions	62.63" x 128.5" x 51.48" (159 cm x 326.4 cm x 130.8 cm)	74.63" x 128.5" x 51.48" (190 cm x 326.4 cm x 130.8 cm)	62.63" x 152.5" x 51.48" (159 cm x 387.4 cm x 130.8 cm)	74.63" x 152.5" x 51.48" (159 cm x 387.4 cm x 130.8 cm)
Cutting Width	132.25" (335.92 cm)	132.25" (335.92 cm)	156.25" (396.88 cm)	156.25" (396.88 cm)
Cutting Edges	3 floor, 2 router	3 floor, 2 router	3 floor, 2 router	3 floor, 2 router
Gate Opening	74.25" (188.6 cm)	74.25" (188.6 cm)	74.25" (188.6 cm)	74.25" (188.6 cm)
Depth of Cut	7.6" (19.3 cm)	9" (22.9 cm)	7.6" (19.3 cm) - std. tire 6.5" (16.5 cm) - opt. tire	9" (22.9 cm) - std. tire 8" (20.3 cm) - opt. tire
Turning Radius	26' (7.92 m)	26' (7.92 m)	26' (7.92 m)	26' (7.92 m)
Gate Cylinders (2)	5" x 22" (127 mm x 559 mm)	5" x 22" (127 mm x 559 mm)	5" x 22" (127 mm x 559 mm)	5" x 22" (127 mm x 559 mm)
Lift Cylinders (2)	5.5" x 24.44" (140 mm x 621 mm)	5.5" x 24.44" (140 mm x 621 mm)	5.5" x 24.44" (140 mm x 621 mm)	6" x 24.44" (152 mm x 621 mm)
Ejector Cylinder (1)	5.5" x 54.50" (140 mm x 1,384 mm)	5.5" x 66.50" (140 mm x 1,689 mm)	5.5" x 54.50" (140 mm x 1,384 mm)	5.5" x 66.50" (140 mm x 1,689 mm)
Cutting Edge Grd. Clearance	24.7" (62.7 cm)	25.62" (65.1 cm)	24.7" (62.7 cm) - std. tire 25" (63.5 cm) - opt. tire	25.5" (64.8 cm) - std. tire 27" (68.6 cm) - opt. tire
Hitch Pin to Rear Axle Length	345.23" (876.88 cm)	357.12" (907.08 cm)	345.23" (876.94 cm)	357.12" (907.08 cm)
Rack Height	31" (78.7 cm)	31" (78.7 cm)	31" (78.7 cm)	31" (78.7 cm)
Rack Tilt-able	58, 85, 112 degree	58, 85, 112 degree	58, 85, 112 degree	58, 85, 112 degree
Weight Distribution	22.5% - 77.5%	22.5% - 77.5%	22.6% - 77.4%	22.9% - 77.1%
Standard Tire Offset Installation	0", 5.5", 8.25", 11" (0 cm, 14 cm, 21 cm, 28 cm)	0", 5.5", 8.25", 11" (0 cm, 14 cm, 21 cm, 28 cm)	0", 5.5", 8.25", 11" (0 cm, 14 cm, 21 cm, 28 cm)	0", 5.5", 8.25", 11" (0 cm, 14 cm, 21 cm, 28 cm)
Optional Tire Offset Installation	N/A	N/A	0", 5.5", 8.25" (0 cm, 14 cm, 21 cm)	0", 5.5", 8.25" (0 cm, 14 cm, 21 cm)
4 Tires Standard	23.5 R25 Radial	23.5 R25 Radial	23.5 R25 Radial	23.5 R25 Radial
4 Tires Optional	N/A	N/A	26.5 R25 Radial	26.5 R25 Radial
Rec. Horsepower	450-620 hp (336-462 kw)	500-620 hp (373-462 kw)	500-620 hp (373-462 kw)	550-620 hp (410-462 kw)
Optional Features				
Bolt-on Push Block	Optional	Optional	Optional	Optional
Tandem Operation	Yes	Yes	Yes	No
Shipping Dimensions				
Length w/ Push Block	378" (960 cm)	402" (1,021 cm)	378" (960 cm)	402" (1,021 cm)
Width	143.5" (365 cm)	143.5" (365 cm)	167.38" (425 cm)	167.38" (425 cm)
Height	111" (282 cm)	111.3" (283 cm)	111" (282 cm)	111.3" (283 cm)
Container Shipping	40' High Cube	40' High Cube	40' High Cube	40' High Cube



An aerial photograph of a vast green field with a winding stream and a dense forest in the background under a cloudy sky. The text 'DO MORE' is overlaid in white outline font.

DO
MORE



QUALITY EARTHMOVERS SINCE 1953

+1 877 634 4622 Toll Free

+1 715 682 9717 Fax

ADDRESS

1115 Rail Drive
Ashland WI. 54806 USA

EMAIL

sales@ashlandind.com

ASHLANDIND.COM



Ashland is an
earthmoving equipment
brand of the K.A. Group

